



Product flyer

CAM for sheet metal machining

The new generation CAM software for sheet metal

almaCAM

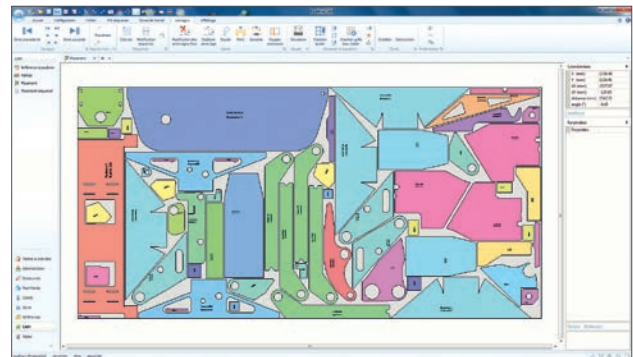
almaCAM is an integrated system including Alma's proven CAM software products, starting off with 2D cutting by following contour and punching applications. It offers a secure environment for data and programming process management. Designed as a highly-reactive programming system, almaCAM provides a collaborative and structuring programming process within an agile, open and adaptive environment.

almaCAM provides highly secured and traceable manufacturing and programming data management. Thanks to various mechanisms and user-guidance, almaCAM ensures data protection and accuracy and the successful completion of programming tasks.

As an open system, almaCAM can easily interact with any existing manufacturing company's information system, in particular ERP.

Moreover, workshop management tools and production statistics are available in the system.

almaCAM is also a platform designed for hosting and developing new CAM or CAM-related applications. This allows offering a set of complementary products integrated within a unique ecosystem.



Advantages and benefits

- A fully-integrated CAD/CAM environment
- A highly-reactive solution for machine programming
- Secure data management for complete traceability
- A user-guided programming process to avoid any risk of errors
- A user-environment designed to simplify programming automation and reduce programming times
- A platform easily adaptable to customer requirements
- A system compliant with electronic document management (EDM) principles and quality standards
- User-role configuration mapped with the customer team organization
- An open system compatible with existing information systems (CAD, ERP, CAM, MES, etc.)
- Built-in workshop management tools (stock, scheduling, etc.)
- Statistics intended for monitoring the production needs
- Short learning curve and maximal usability thanks to an intuitive user interface and reliable tools to access data
- Access to new CAM or related applications in almaCAM ecosystem thanks to an open platform

Alma

CAM software

15, rue Georges Perec - F-38400 Saint-Martin-d'Hères

Tel. +33 (0)4 76 63 76 20 - info@almacam.com

www.almacam.com

almaCAM key features

Smart data in a secured system

- Data security resulting from a centralized database
 - > No potential loss of information
 - > Possibility of complete or partial database backup
- Even performance with large amounts of data
- Complete data traceability
 - > e.g., retrieving parts produced from a given cast number
 - > e.g., displaying all the nesting layouts containing the parts of a given order
- The user does not need to worry about the data organization
- almaCAM follows the principles of electronic data management (EDM) and data quality management
- Multi-user architecture allowing concurrent access to the same data
- Possibility to perform statistics for improved business management
 - > e.g., material consumption, rate of machine utilization

A structuring programming process

- Contextual functions according to the data which the user is working on
 - > e.g., when the user selects a part to modify, she/he can launch the drawing module
 - > e.g., when the user selects parts to produce, she/he can launch the nesting module
- almaCAM ensures the successful completion of the programming process
 - > User guidance at every stage of the programming process
 - > User emancipation of tasks to perform
 - > No risk of errors
- almaCAM has been designed to simplify programming automation and allows automating a sequence of tasks resulting in time savings
 - > almaCAM provides data protection and accuracy thanks to various invalidation mechanisms
 - > e.g., the NC program validity is checked if it contains a part that has been modified since its creation
- almaCAM provides flexible management in terms of part manufacturing
 - > e.g., possibility to mix parts from different orders
 - > e.g., possibility to add parts to complete a nesting layout at any time
- Thanks to the multi-technology approach for the part preparation, possibility to easily switch from one cutting technology or machine to another one at any stage of the programming
- The user-role management simplifies the organization of the programming team in a collaborative context
 - > User-roles allow defining restricted access to specific data or functions

- > e.g., the designer role can be configured to access only the part database and the drawing module that allows modifying the parts
- almaCAM integrates the workshop requirements at every step of the process:
 - > Stock management
 - > Sheet and cast number management
 - > Scheduler module with machine workload analysis
 - > Ergonomic workshop document for quickly identifying and handling parts to sort out

A ultimate usability

- A consistent and user-friendly environment
- An simple data manipulation thanks to a range of advanced functions including data filtering, data grouping, data searching, etc.
- Navigation functions providing direct access to interrelated data
 - > e.g., possibility, from a nesting layout, to directly access a part in order to modify it
- Intuitive user interface fully compliant with 2013 Microsoft Office SUI design guidelines
- Short learning curve
- Simplified migration
 - > Possibility to automatically convert data from an earlier model to the almaCAM model
 - > Possibility to import customizations in case of software updates
- Support integrated tools (for extracting and importing data required for problem determination and resolution)

An open and agile platform

- almaCAM provides a framework allowing various integrated customizations (including customizations by the customers themselves)
 - > Easy customization: possibility to create additional user fields, data list fields etc.
 - > Possibility to develop specific applications that can be integrated to almaCAM programming process and using almaCAM user interface
 - > Possibility to effortlessly customize the process workflow according to the customer requirements
- Complete integration to the customer environment and interaction with any existing information system (CAD, ERP, CAM, MES, etc.)
- Possible integration of CAM or related applications into the unique and consistent environment of almaCAM ecosystem
 - > The customer benefits from an expanded product offering with the possibility to plug-in external modules (quotation module, workshop and scheduler module with machine workload analysis, off-line programming module for 5-axes machines or robots, etc.)
 - > Possible mutualization of applications developed by partners and that can be re-used for other customers

